

Linear Model Ensemble

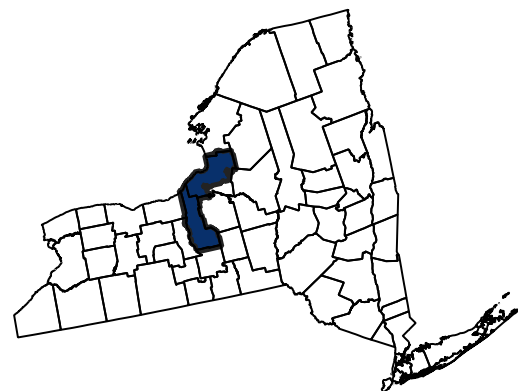
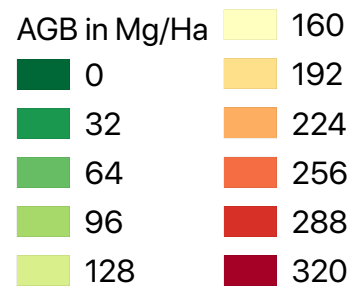
RMSE Weighted Ensemble

Random Forest



Gradient Boosting Machine

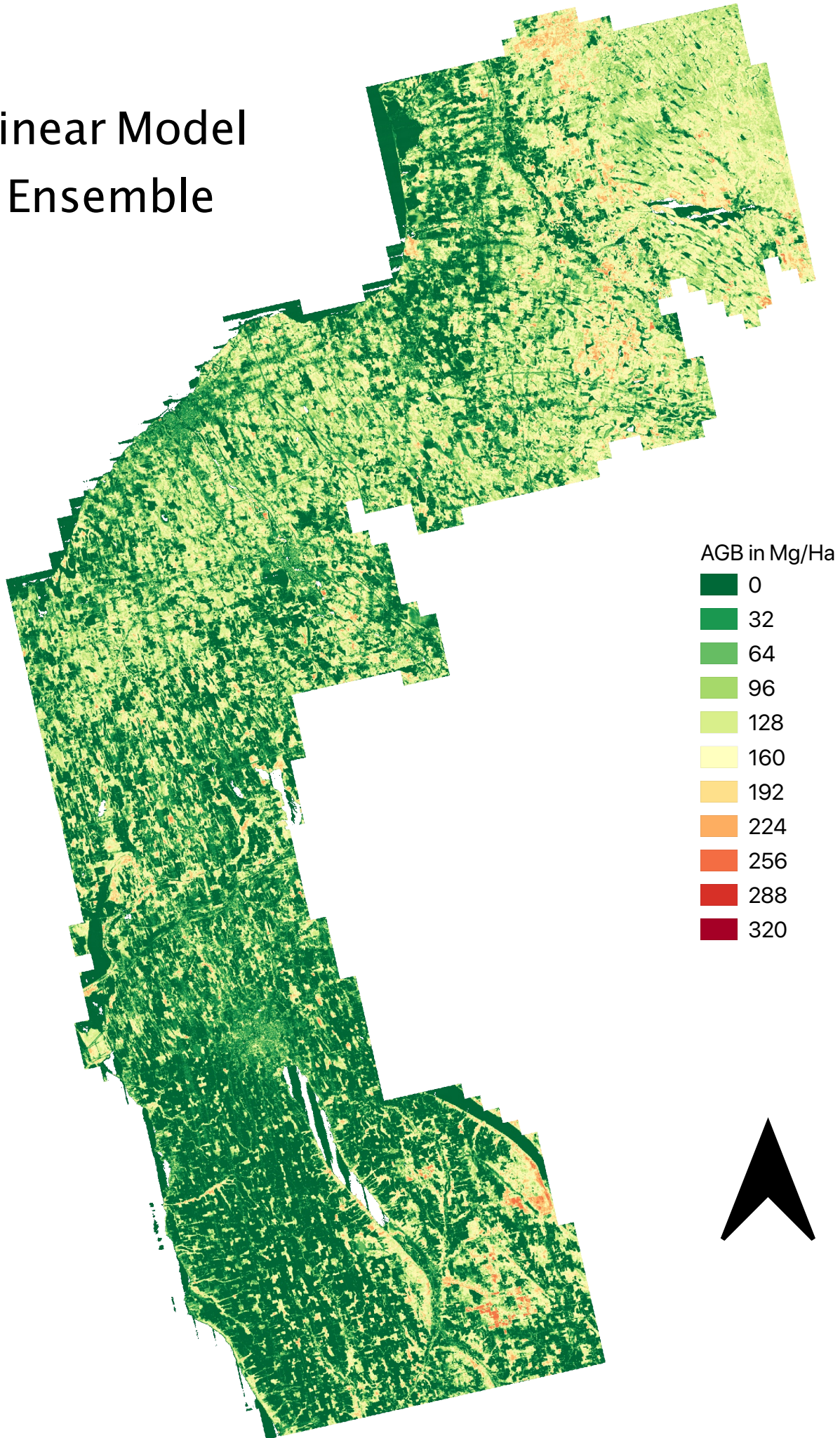
Support Vector Machine



Model Information: [https://cafri-labs.github.io/model-updates/2021\\_02\\_03\\_big\\_tune.html](https://cafri-labs.github.io/model-updates/2021_02_03_big_tune.html)

Raster Stats: <https://drive.google.com/file/d/1Mkh9MuPQteubV5myD7n0Gf-WkaXbRfDT/view?usp=sharing>

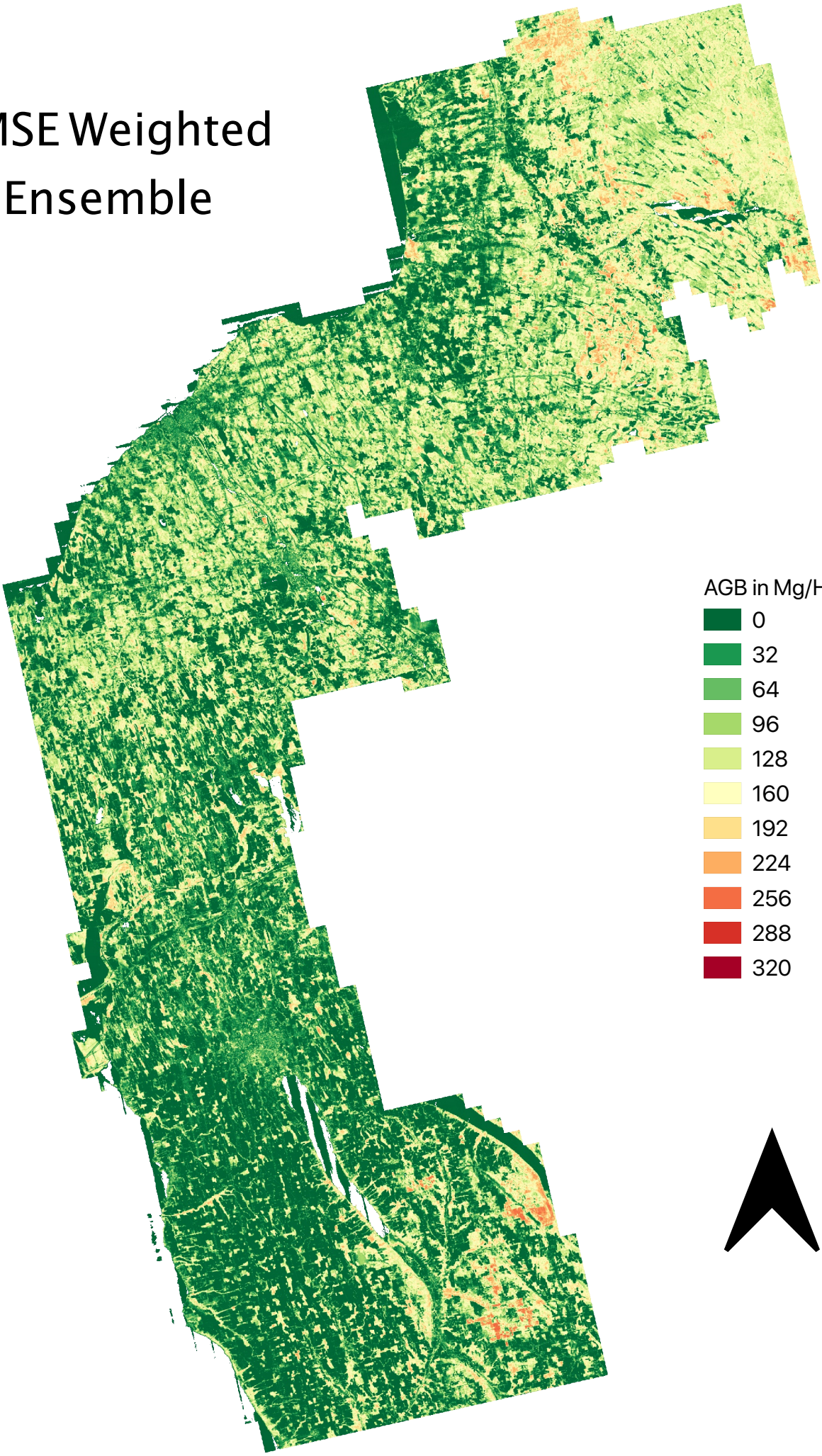
# Linear Model Ensemble



0 10 20 30 40 50 km

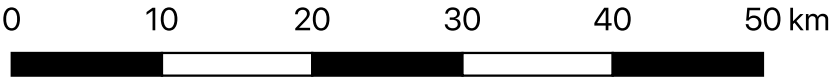


# RMSE Weighted Ensemble

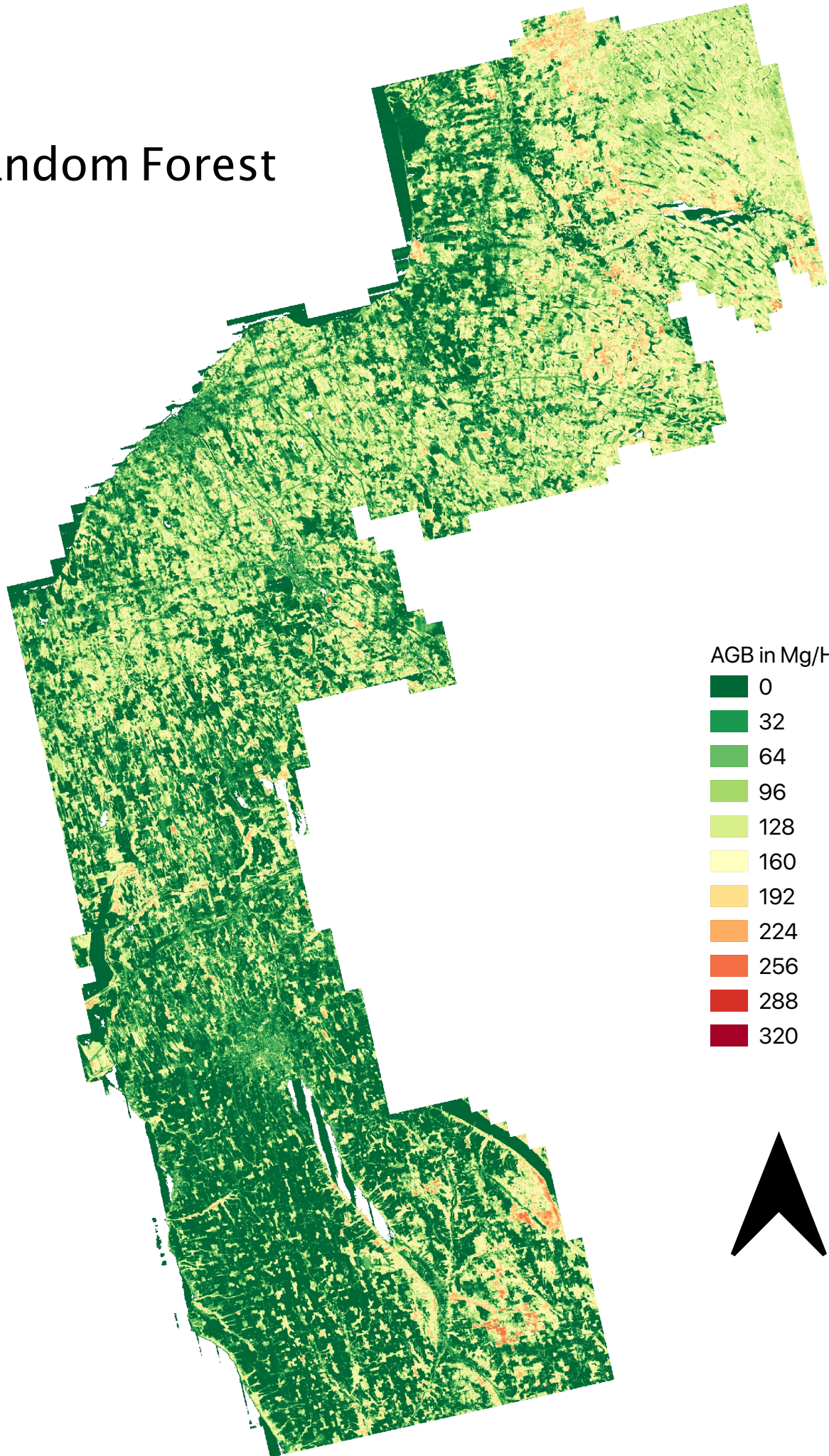


AGB in Mg/Ha

- 0
- 32
- 64
- 96
- 128
- 160
- 192
- 224
- 256
- 288
- 320



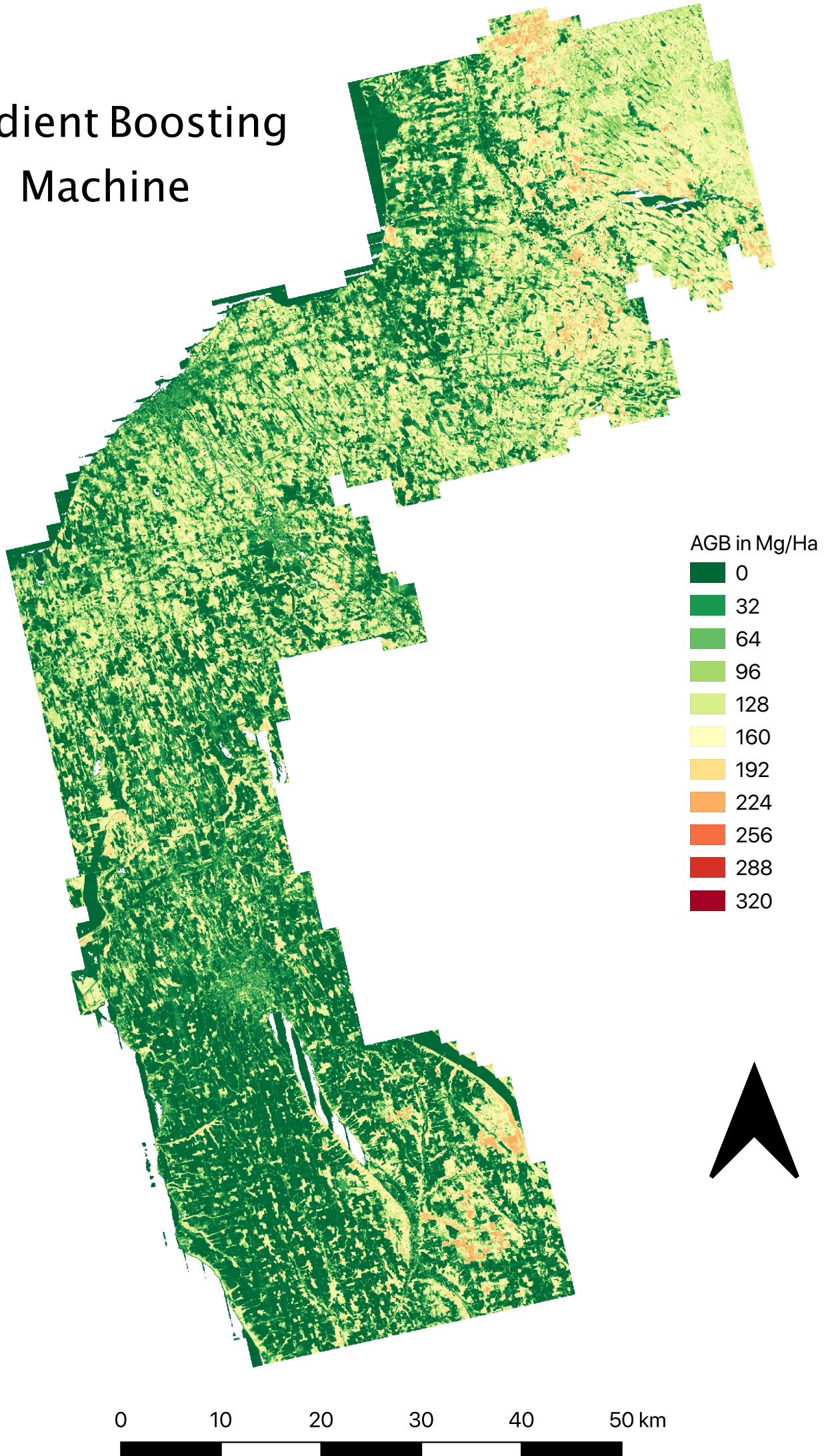
# Random Forest



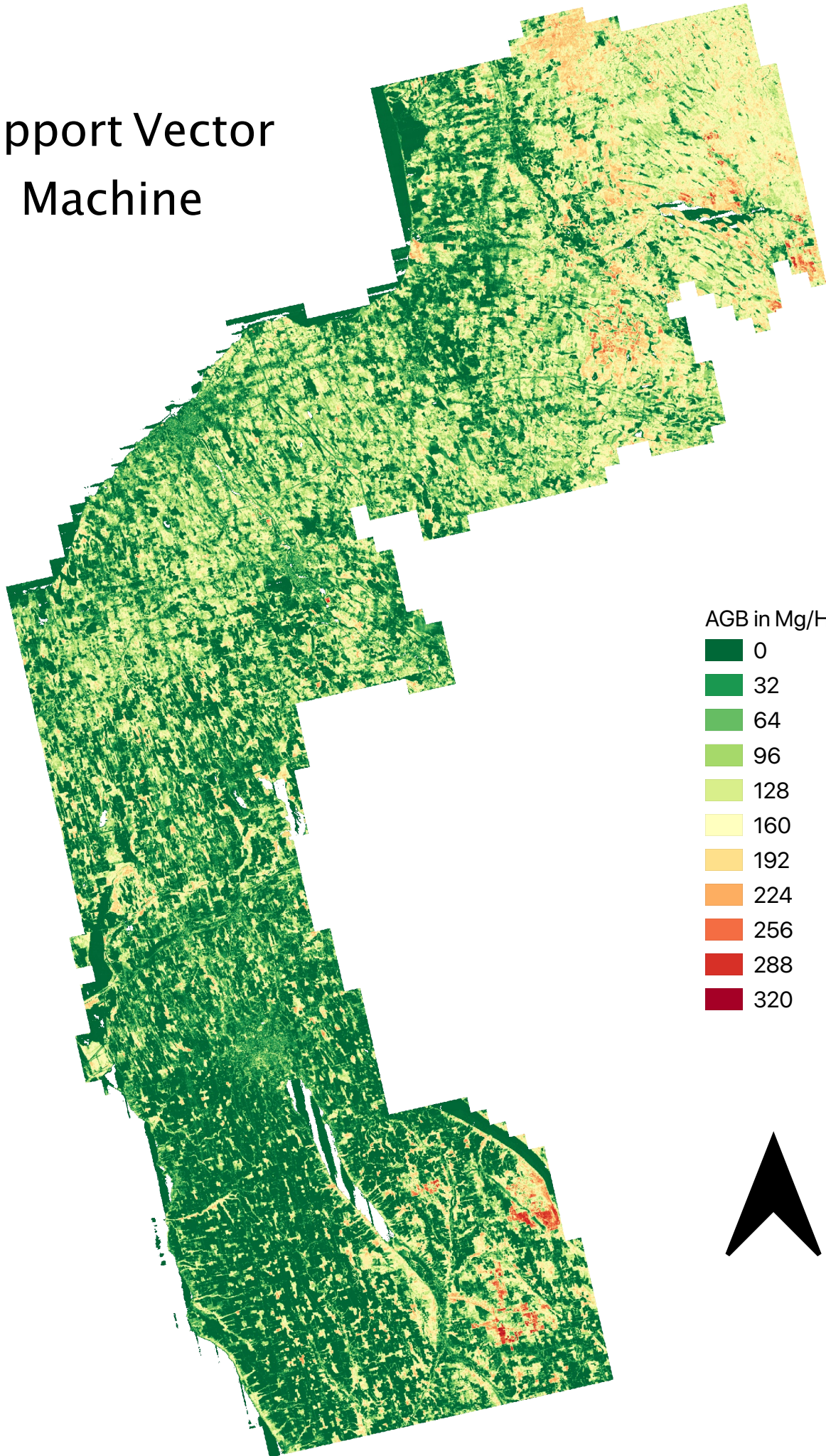
0 10 20 30 40 50 km



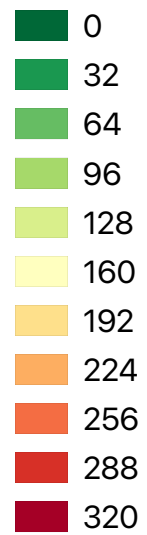
# Gradient Boosting Machine



# Support Vector Machine



AGB in Mg/Ha



0 10 20 30 40 50 km

